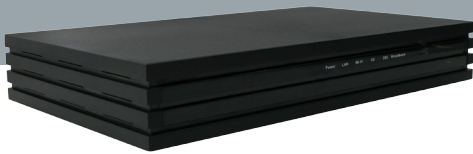


TG581n

Wireless n ADSL2+ Gateway



TELECOM
DATA

Faster, Farther

Home networking experience will definitely change with the Technicolor TG581n. With an improved coverage and throughput compared to any 11b/g or 1x1 11n access point (from 54 to 65 Mbps), the Technicolor TG581n doubles the bandwidth and improves the link stability, coverage and coexistence with other access points in the neighbourhood.

High Performance Router

The Technicolor TG581n is a high performance router: with a simultaneous operation of 802.11b, 802.11g and 802.11n 2x2, speed, security and performance are guaranteed.

Featuring an integrated 10/100Mbps 4-port switch, the Technicolor TG581n offers seamless connection of wired and wireless devices from anywhere in the home.

The integrated modem supports ADSL, ADSL2, and ADSL2+.

Features at a Glance

- Integrated ADSL2+ modem
- 4 Fast Ethernet ports to connect multiple devices, such as PCs, laptops, set top boxes...
- Wireless networking on-board: 2x2 802.11n (2.4 GHz)
- Wi-Fi Protected Setup
- Up to 4 SSIDs supported
- 1 USB 2.0 master for 3G backup...
- TR-069 Remote Management
- Built-in firewall



TG581n

Wireless n ADSL2+ Gateway

Highest Security

The Technicolor TG581n supports powerful wireless security mechanisms, such as Wi-Fi Protected Access (WPA2). This allows users to communicate and access data with efficient link quality and the highest level of network security.

The Technicolor embedded firewall guarantees users the ultimate level in network security. Through integration with Network Address & Port Translation (NA(P)T), the firewall leverages all the ALGs provided in the NA(P)T context to minimize undesired service impact.

The support of multiple SSIDs in the gateway enables support for up to 4 independent wireless access networks. These additional wireless networks allow other wireless users to enjoy the high performance access without compromising the integrity of the basic network, thus keeping the original network access limited and secure.

Easy Management

The Technicolor TG581n is designed according to the TR-069 Data Model, through which the device can be configured remotely.

ECO

Technicolor offers its customers ECO labeled products. Next to carefully selected plastics and packaging to minimize the ecological footprint, the gateways benefit from a unique combination of hardware and software features that reduce power consumption substantially.

TG581n

Wireless n ADSL2+ Gateway

Technical Specifications

Hardware Specifications

- Interfaces WAN RJ11 DSL line port for ADSL/POTS
- Interfaces LAN 4-port autosensing 10/100Base-T auto-MDI/MDI-X Ethernet switch
Wi-Fi IEEE 802.11b/g/n 2x2 on board
1 USB 2.0 certified host/master
- Extras WPS button
Reset button
- Dimensions 196 x 118 x 34 mm (7.7 x 4.6 x 1.3 in.)
- Temperature 0° - 40° C (32 - 105° F)
- Humidity 20% to 80%
- AC Voltage 100-240VAC (switched mode power supply), 50-60 Hz

DSL Modem Specifications

- ADSL ANSI T1.413 Issue 2,
ITU-T G.992.1 Annex A (G.dmt)
ITU-T G.992.2 Annex A (G.lite)
ITU-T G.994.1 (G.hs)
Maximum Rate: 8 Mbps for downstream and 1 Mbps for upstream
- ADSL2 ITU-T G.992.3 Annex A, L, (G.dmt.bis),
ITU-T G.992.4 Annex A, L, (G.lite.bis)
Maximum Rate: 12 Mbps for downstream and 1.5 Mbps for upstream
- ADSL2+ ITU-T G.992.5 Annex A
Maximum Rate: 24 Mbps for downstream and 3 Mbps upstream
- Supports Dying Gasp (optional)

Management

- User Friendly GUI via HTTP and HTTPS
- Command Line Interface (CLI) over telnet
- TR-069 CPE WAN Management Protocol
- Software upgrade via Web GUI

Services

- Printer sharing
- Content sharing Samba File Server
- USB 3G adapter support
- Dynamic DNS
- Website URL and Content-based filtering (optional)

Wireless Performance and Security

- Wi-Fi IEEE 802.11b/g/n 2x2 access point
- Wi-Fi CERTIFIED®
- WPA™-Personal / WPA2™-Personal, WEP™
- Wi-Fi Multimedia (WMM®)
- Wi-Fi Protected Setup (WPS™)
- Up to 4 SSID support
- Security and service segregation per SSID
- Dynamic rates switching for optimal wireless rates
- Manual/auto radio channel support

Firewall Security

- Stateful Packet Inspection Firewall (SPIF)
- Customizable firewall security levels
- NAT firewall

TG581n

Wireless n ADSL2+ Gateway



Technical Specifications

Enabling Technologies

- Quality of Service: ATM, Ethernet, Wi-Fi, IP
- Game and Application Sharing NAT PortMaps
- «SIM-lock» Provider Locking
- DHCP conditional serving & relay, DNS server & relay
- IGMP v1 / v2 support
- IEEE 802.1q VLAN bridging, Multiple bridge instances
- UPnP™ support: enables game technologies (PS2, XBox live, DirectPlay, ...) and conferencing functions of Microsoft Messenger

Content of the Box

- Wireless-n Multi-Service ADSL2+ Gateway
- Power Adapter
- Ethernet (RJ45) and telephone (RJ11) cable
- Safety and Regulatory booklet
- Filter(s) or splitter(s) (optional)



Technicolor TG581n back panel

Technicolor Professional Services are available to address your demands for qualified technical support & warranty, product maintenance, access to training courses and tailor-made solutions to specific product evolution. For more information, please ask your usual contact person.

TECHNICOLOR WORLDWIDE HEADQUARTERS

1, rue Jeanne d'Arc
92443 Issy-les-Moulineaux France
Tél. : 33(0)1 41 86 50 00 - Fax : 33 (0) 1 41 86 58 59

www.technicolor.com

SALES CONTACT

For more information please get in touch with your usual sales representative or use the following email:

telcosales@technicolor.com

technicolor



© Copyright 2011 Technicolor. All rights reserved.
Photos and specifications subject to change without notice. All trade names referenced are service marks, trademarks, or registered trademarks of their respective companies.
E-DOC-DAT-20100902-0001 v2.0
DS-154-v02-1104