

DMZ no Gateway ST510v6 firmware 5.4.0.13/5.4.0.15

Acesse o Gateway via interface WEB e clique em **Home Network**, depois clique em **Devices**



Clique em **Assign the public IP address of a connection to a device**




[Administrator] Overview | [Configure](#) | [Help](#)
[Home](#) > [Home Network](#) > [Devices](#)



Local Network Devices

- Detected Device(s)

The table below contains the list of devices the SpeedTouch detected on your local network. Click on a device name to get more information on a device.

| Name | IP Address | Interface |
|--|--------------|--|
|  dsldevice | 10.0.0.138 | |
|  ConnectPlay-01 | 192.168.1.64 |  ethport4 |

Pick a task...

-  [Assign a game or application to a local network device](#)
-  [Assign the public IP address of a connection to a device](#)

Clique em **Edit**, caso o link **Edit** não apareça desligue e ligue novamente seu gateway e recomece a configuração.



Assign the public IP address of a connection to a LAN device

This page allows you to assign the public IP address of your Internet Connection(s) to a specific device on your local network...

You might want to do this if:

- You encounter issues with some applications through the Network Address Translation engine of your SpeedTouch.
- This device is running server applications (web server, ...) and you want it to be accessible from the internet.
- This device has to be considered as the unique entry to your local network (DMZ).

| Internet Service | Device | |
|------------------|--------------|----------------------|
| Internet | Not assigned | Edit |

Na guia **Device** selecione a máquina que receberá o endereço IP válido e clique em **Apply**



Assign the public IP address of a connection to a LAN device

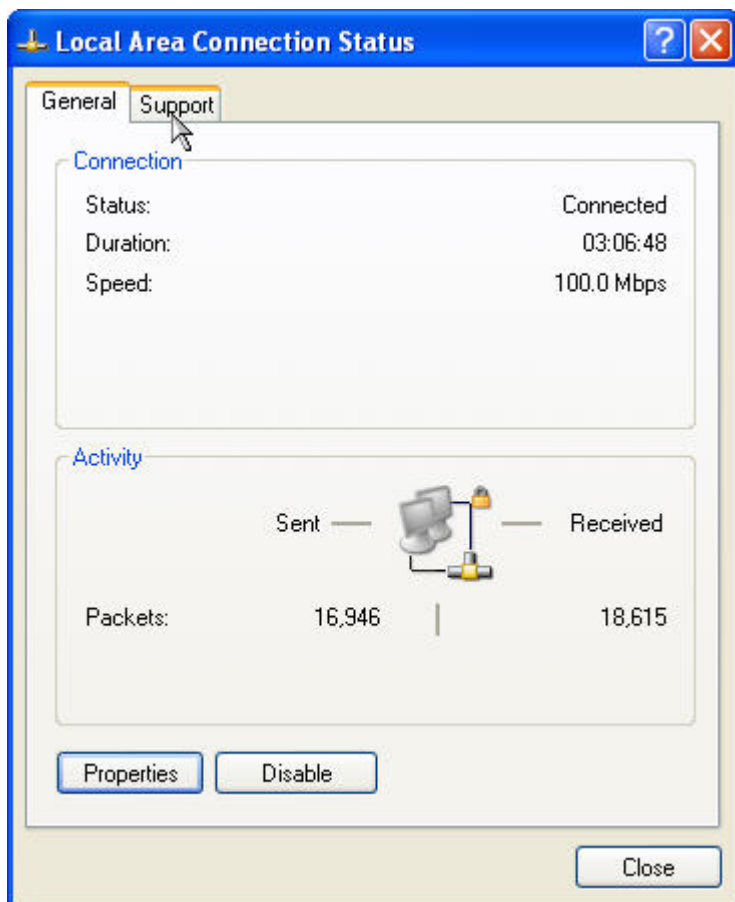
This page allows you to assign the public IP address of your Internet Connection(s) to a specific device on your local network...

You might want to do this if:

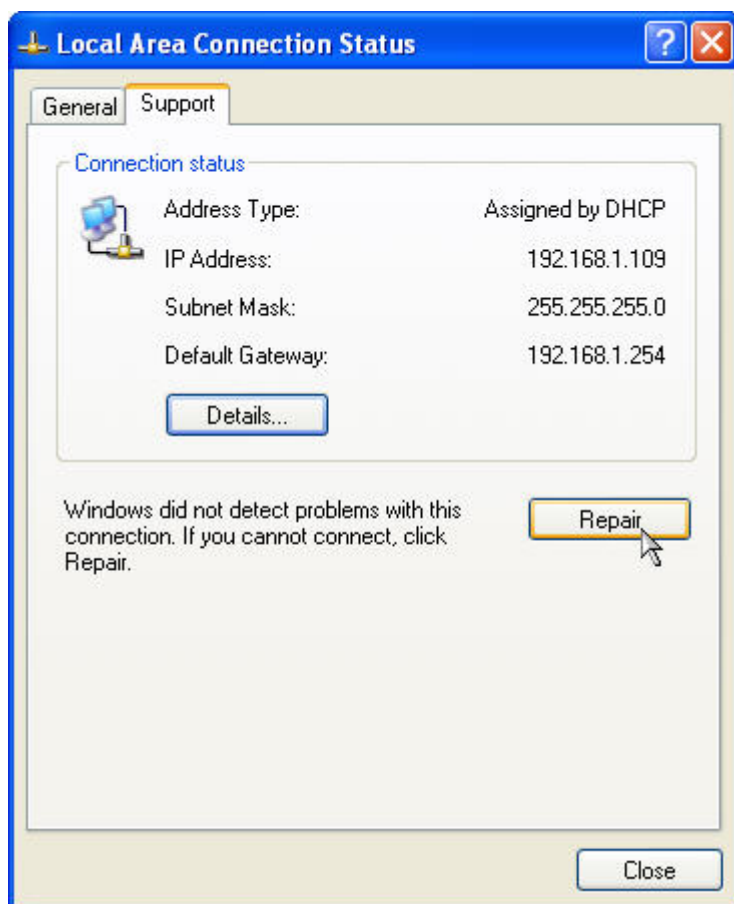
- You encounter issues with some applications through the Network Address Translation engine of your SpeedTouch.
- This device is running server applications (web server, ...) and you want it to be accessible from the internet.
- This device has to be considered as the unique entry to your local network (DMZ).

| Internet Service | Device | |
|------------------|---|--|
| Internet | <input type="text" value="ConnectPlay-01"/> | Apply Cancel |

No canto direito de seu monitor clique duas vezes no ícone  depois clique em **Support**



Agora clique em **Repair**



Pronto, seu endereço IP válido foi asignado à sua máquina.

